

Audicy Software Version 2.01

Mini Manual

Welcome to Version 2.01

Audicy Version 2.01 contains many new useful features for all Audicy users. More importantly, it provides a software foundation for optional networking capabilities. Highlights of Version 2.01 include:

- Support for optional Networking. Now, Audicy workstations can be connected to simple desktop PCs or advanced file servers, enabling production and library sharing between multiple Audicys, or wave file transfers to and from other computers.
- New Folder capabilities, allowing users to create and sort productions and libraries in their own unique folders.
- Improved layout and more intuitive navigation in Audicy form screens.
- Better, faster support for .WAV files. Now it's faster and easier than ever to create multimedia tracks, or use Internet sounds in your Audicy productions.
- More on-screen Help, including instant descriptions of every button on the Console, to make learning Audicy even easier.
- Hidden performance improvements, including intelligent management of internal memory.
- Support for our new Remote Control hardware option.

About Audicy Networking

Our new Network option uses high speed or standard Ethernet to link any number of Audicys to one or more central servers. The servers are standard PCs running Audicy Network software under Windows 95 or Windows NT. (Novell will be supported in the future).

V2.01 is a software foundation for Orban's networking option. The Network option cost is \$950 per workstation (part number AD/NK/MS), which includes

software and a high speed network card. Server installation software is \$950 (part number AD/NSW/MS). Server installation and cabling are not provided by Orban.

Audicy Networking is:

- Easy to use. Log on and off from simple screens in the Job Controller's System Utilities menu. Once you're on the network, your work style doesn't change at all: Networked projects and sounds appear in the same lists as local ones.
- Flexible. You decide which networked projects and sounds are accessible to all users, which are available only to you, and which never go to the network at all. Supervisors, production managers, or chief engineers can be given access to all networked productions from any Audicy. Network administrators can add new users, change permissions, or create new network shares any time.
- Fast. Orban uses either 100Base-T or 10Base-T Ethernet hardware for fast or standard throughput. Users can shadow productions directly to network drives, or preview library sounds directly from the server.

Audicy networking provides direct access to multiple network drives, which can be organized by function or by user. For example, a "Sounds" drive can be available to everyone on the network at the same time. An "Imaging" drive can be password-protected and available only to senior producers. A "Harry" drive could be made available to just that one operator. Any user can sit at any Audicy on the network, log in with his or her user name, and gain access only to productions or library sounds they have rights to. There can be as many as 500 separate drives on the network, and a single user can access up to ten of them per network logon.

Audicy networking is transparent from the operators' point of view. Network drives appear in Audicy production and library forms as if they were hard drives, and any user logged into one can create or erase "folders" in it. (Folders — another new Audicy feature — are described below.) Once a folder is created on a given network drive, it appears on every Audicy logged into that network drive. Only one user can make changes to a specific folder at a time, so you don't have to worry about someone else changing a production while you're working on it.

Because networks are almost infinitely scaleable, complex network system architecture, setup and administration needs to be handled on-site by local engineering talent. Facilities operating elaborate network systems are assumed to have a System Administrator on staff capable of running and troubleshooting the network. Orban networking is primarily a software product that provides the root software services to network to Microsoft (Win95 or NT) and Novell servers (in a future release), as well as software and hardware support for Audicy workstations. Complete instructions for installing and administering the network are shipped with the network software.

Folders

Got a lot of sounds or productions? Trying to make sense of hundreds of library elements on a Jaz disk? Audicy Version 2.01 lets you organize them into folders:

- Up to 500 library and 500 production folders can be created on a disk, removable Jaz or Zip cartridge, or on a network drive. Each folder can hold up to 500 productions or 500 library elements.
- Whether a folder is local or on the network, it appears in Audicy lists the same way that hard drives do. You can Copy, Erase, Sort, Backup, or do any other Audicy operation using familiar Job Controller menu choices.

While you're working on a production, its full file path — including drive, folder, and name — appear in the editor's Job Name display.

The folder feature adds two new choices to the Job Controller's System Utilities menu, Make Folder and Erase Folder. Folders can be created or erased at any time, on any fixed or removable disk or network drive that's accessible to you. Folder names follow DOS naming conventions, and Audicy automatically checks their format as you enter them.

Making Folders

1. Under the System Utilities menu in the Job Controller, select Make Folder and press Enter.

You'll immediately see the following form:

MAKE NEW FOLDER

Location C:(fixed)
D:(jaz/zip)

New folder name dogbarks

Folder type Library

Do you want to proceed Yes, create new folder

Figure 1: Make New Folder Screen

2. Select from one of the available locations — a local hard drive, a JAZ or ZIP drive, or a network drive — and press Enter.
3. Type in a new folder name and press Enter.

Using the system’s keyboard, enter a name for your folder, up to 8 characters long, using numbers, letters and the punctuation characters “-” (dash or minus) and “_” (underscore).

Note: Spaces and extended characters such as “\$” or “@” may not be used in folder titles.

Use any name you like; the system will warn you if you’ve entered one that matches a name already in that location.

4. Select a Folder type, then select Enter.

Choose whether you want to create a production or library folder, and press *Enter*.

5. Press Enter to confirm your choices.

Your new folder is ready for use.

The system allows you to create production and library folders with the same name – you just can’t have two library folders or two production folders in the same location with the same name. Each local hard drive, Jaz drive, or network drive is *itself* a folder (called a “root” or *common* folder), and it can contain both production and library sounds.

Using Folders

We redesigned Audicy’s selection forms to make folders easy to use. Here’s a typical example, from the Job Controller’s Edit Old menu choice:

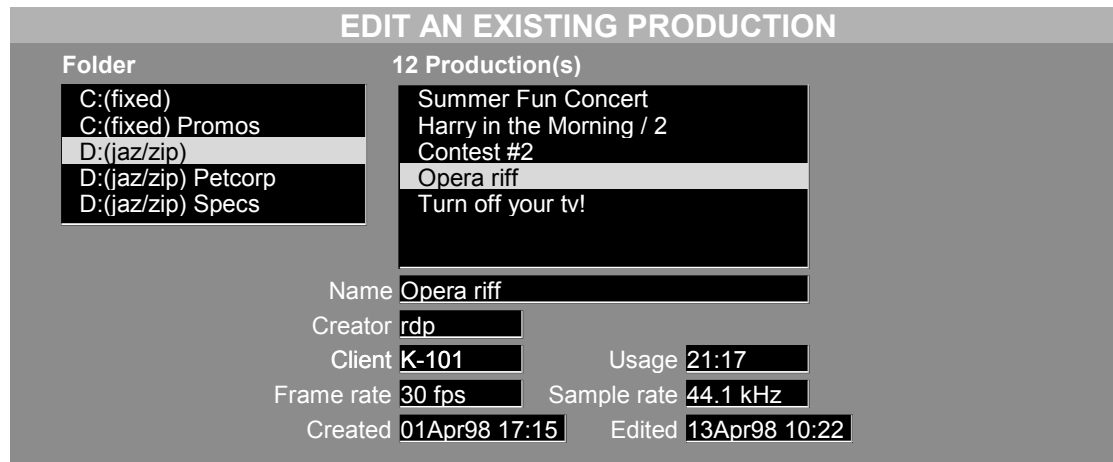


Figure 2: Edit Old Screen and Folder Field

1. Under the Production Manager menu in the Job Controller, select Edit Old and press Enter.

2. Select a Folder.

Note: The screen will come up displaying productions or library sounds from the last default folder you used.

Use the *left* arrow button to select the Folder field.

Then use the *up* and *down* buttons or the Scrubwheel to scroll through the available choices. Notice that Drives C: and D: appear twice in the Folder list above. They can actually appear dozens — or even hundreds — of times, depending on how many folders you've created on each drive. Its first appearance, with no folder name, is for the common folder on the drive.

3. Select a production.

Once you've selected a folder, use *Enter* or the *right* arrow to move to the Production field. This will refresh the list, displaying productions belonging to the folder you just selected.

If you don't find the production you're looking for, use the *left* arrow to move back to the Folder field and try looking in another folder.

4. Press Enter to open the existing production.

The arrow buttons work consistently throughout Audicy forms: To move horizontally from one field to another, use *left* or *right*. Then you can use *up* and *down* to scroll through the selections.

In functions where you won't be changing folders very often (for example, in Library: Save operations) the Folder field appears above the main selection field. In this case, use *up* and *down* to move to the Folder field, then use *up* and *down* to scroll, or *left* and *right* to return to the next field.

Version Incompatibility

Please Note: Versions earlier than 2.01 have no ability to recognize folders. This means that if you create a folder on a Jaz disk under Version 2.01, then load that Jaz disk onto an Audicy running Version 1.50, none of the folders will be displayed on screen, and you will not have access to productions or library sounds in them. However, you will continue to have access to any productions or library sounds stored in the "root" or common folder.

Erasing Folders

To remove a folder from a drive, select the Erase Folder menu choice and highlight the production or library folder you want to remove. Please note that you may only erase empty folders. If you attempt to erase a folder which still has files in it, the system will inform you, and you will need to erase its productions or library sounds first before you can remove that folder. Also note that the "root" or common folders — for example, C: (fixed) — may not be erased.

WAVE Import / Export Improvements

We've made it easier to work with standard computer .WAV sound files:

- The import and export forms have been improved, including a full directory navigator. .WAV files no longer have to be stored in specific .WAV directories, but on any directory on any drive or network drive in the system.
- Importing and Exporting also works across Audicy Networks. You can access a library sound on the server, convert it to .WAV, and save it on the server or any local drive. Or you can access a .WAV file on the server or local drive, convert it to a library sound, and save it locally or on a network drive. Audicy networking even lets you use pull .WAV files from CD-ROMs located on the network.
- The .WAV system now remembers the last drive, directory, and file used — even after going to edit a production or when you turn the system off. This saves time when working with multiple files and when you have standard export and import directories.
- .WAV file I/O performance has been substantially improved. Transfers to Jaz drives are up to 3 times faster, while transfers to floppy disks are up to fifteen times faster than Version 1.50.

Navigating WAVE Directories

You can access .WAV files in any directory on any disk or network drive connected to your Audicy, including CD-ROMs residing on the network. Here is an example:

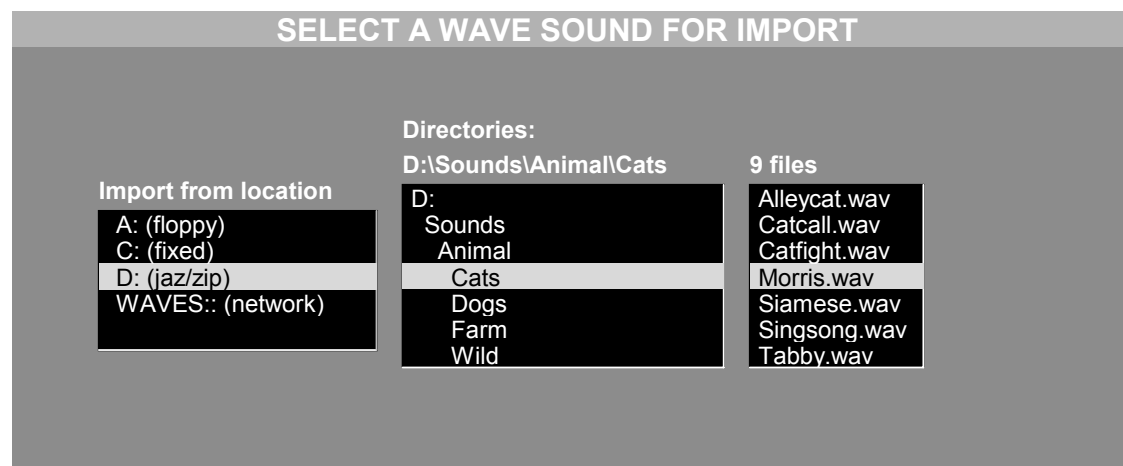


Figure 3: Import Wave Screen

The form shows the currently selected location (a hard drive, Jaz drive, floppy drive, or network drive), directory and file. In the example shown above, the current selected .WAV file is D:\Sounds\Animal\Cats\Morris.wav. You can easily move to other directories. Move the cursor in the Directories list, select the *Sounds* directory and press *Enter*. The display will be updated with the new directory and file information, showing, as an example:

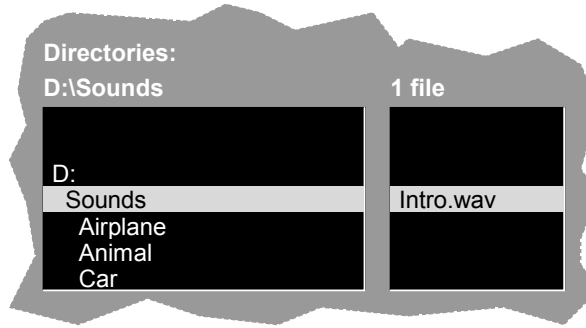


Figure 4: Finding Wave Sounds in a Directory

From here, you can access any of the subdirectories in the D:\Sounds directory, like *Animal*, *Airplane*, *Car*, and so on. From there, you could explore what might be in the *Airplane* directory:

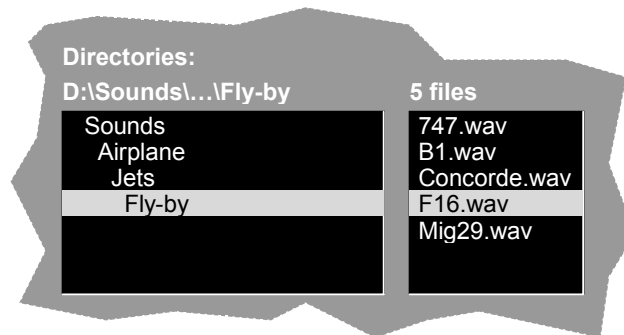


Figure 5: Finding Wave Sounds in a Subdirectory.

In this way, you can move up and down through an entire disk or CD-ROM of sounds.

Audicy Remote Control Support

We've rewritten the Console software to support our new optional remote control, pictured here:

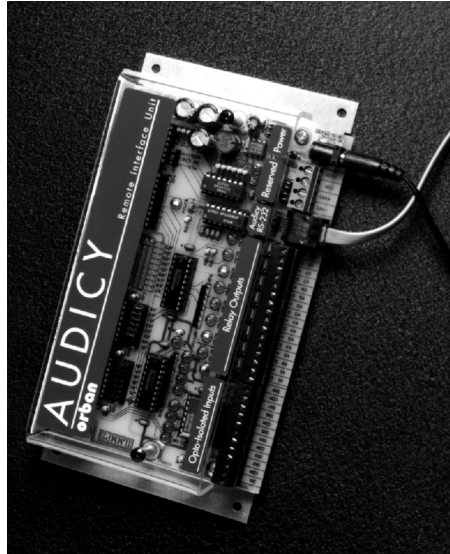


Figure 6: Audicy Remote Control Option

The Remote Control provides:

- 8 Opto-isolated inputs for basic transport and locate commands, so you can put Audicy into play from an announce booth, or trigger Audicy to record from an external device.
- 8 Relay outputs allow you to trigger other machines from Audicy. For example, you could configure your studio so pressing **P** (Play) on Audicy would place a cart machine or on-air delivery system into record.
- The remote connects to the rear of the Audicy console, and uses RS-232 serial communication, allowing long cable lengths without expensive parallel wiring.

The complete Remote Control kit (part number AD/RMT) includes remote unit, adapters, power supply and an RS-232 connection cable.

More Help, More Information

Audicy now has Button Help:

- Hold *Help* down while you press any Console button, and you'll see a full description of that button and tips for its use. You can, literally, learn Audicy by "poking around."
- Menu *Help* still works similarly to previous versions, except there is now a "welcome page" the first time you press *Help*. Highlight any menu choice and press *Help*, then press *Enter*, or *Help* again to view descriptions of that function and more tips.

Other Changes

We've redesigned the Job Controller's About menu choice to report more information, and provide a clearer display of what software modules have been installed. We have also enhanced the Set Defaults choice to be clearer and more intuitive. We suggest you check About as soon as you've installed the Version 2.01 software.

Better Performance

We've made changes deep within Audicy's software. You won't see them as new functions, but they'll make Audicy run better:

- New software support for better memory management. This lets us perform some editing functions faster, and rearranges existing application memory so we have more room to expand and support new features in the future.
- Added protection for better recovery in case Job Controller file operations, such as Copy or Export Wave, are interrupted by power failure.
- New multi-drive disk caching and removable media drivers, specially written by Orban with active cooperation from Iomega, make Jaz and Zip drive options work even faster with Audicy audio files.
- Internal support for additional computer hardware configurations, to give us more choices for future Audicy development.



H A Harman International Company

1525 ALVARADO STREET, SAN LEANDRO, CA 94577 USA

Phone: (1) 510/351-3500; Fax: (1) 510/351-0500; E-Mail: custserv@orban.com; Site: www.orban.com

P/N: 96092.201.01